

Residential Virtual Solar Rough-in Inspection

Photo Submission Requirements

Digital Photo Requirements:

- Photos must be clear and in focus. Make sure the photo isn't blurry. If the inspector cannot see the details, the inspection will fail.
- Avoid shadows or fingers covering part of the photo.
- Send only the photos listed in the photo criteria checklist. Do not include extra or unrelated pictures.
- If a single picture clearly shows the required item, do not send multiple versions or angles of the same component unless the checklist specifically asks for them.
- Take photos in bright, natural light whenever possible.
 - Dark rooms cause phones to work harder, which can increase image file size.
- Move closer to the object instead of using the phone's zoom feature.
 - Zooming can reduce the quality of the photo and increase the file size.
- Avoid "Pro", "Raw" or maximum quality photo modes.
 - These modes create very large file sizes and are usually unnecessary.
- Choose a smaller size when sending or uploading photos.
 - If your phone prompts you, choose medium or small.
- Vertical (portrait) photos are often smaller in file size.
- Send photos in JPEG (JPG) format whenever possible
 - HEIC is the default format for newer iPhones but may be harder for some systems to open; photos may need to be converted to JPEG before sending
- Please name the attachments clearly to ensure they are easy to understand. Refer to the example below for guidance.

Panel sticker.jpg
Roof 1.jpg
Roof 2.jpg
Roof 3.jpg
Roof 4.jpg
SLD 1.jpg
SLD 2.jpg

- You will need to upload one photo at a time. If you need to upload multiple photos within the same section, click “Add another” to continue adding as many as needed to meet the criteria.
- **Each individual file has a maximum size limit of 25 MB, with a total combined upload limit of 100 MB.**

Lastly, please upload all required photos to meet the inspection criteria. There are five separate tabs for photo uploads, each corresponding to a specific inspection criteria. Make sure to upload your photos under the correct sections. If any tab is missing a photo, the system will not allow you to submit the form.

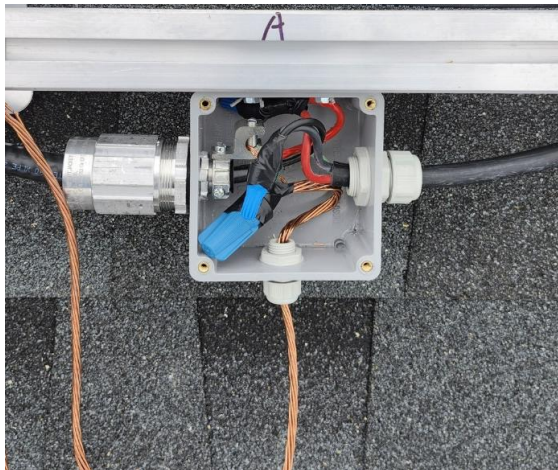
1- Go to [Solar Rough-in Remote Inspection Request | Nova Scotia Power](#)

2- **Junction Boxes, Conduits, Conductors –**

Requirement: Photos must be taken of each junction box, conduit, and cable run.

Example:





3- Full Roof Layout Picture –

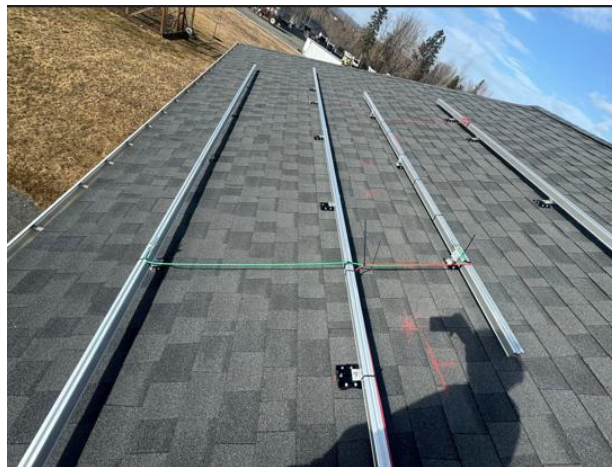
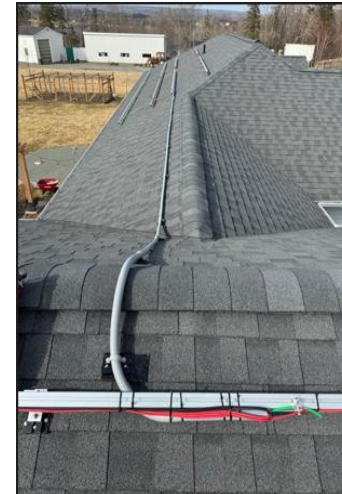
Requirement: Photos must be taken of the racking system from multiple angles, ensuring the complete array is included.

Example:



4- Racking, cabling, connections –

Requirement: Photos must show rails with cables supported, bond conductors with complete connection points, and cable routing with jumped sections.



5- Equipment Pictures –

Requirement: Photos must include all equipment and equipment labels with approval markings. All photos must be clear and legible.

Example:



Acceptable



NOT Acceptable

6- Conformation of Home Photo –

Requirement: Photos must include a wide shot showing the home to confirm that the array matches the property. The address or civic number should be visible, which can be displayed on a temporary sign.

Example: The photo below is for example purposes only and should show only the installed



